



THOR LINE

MINIMUM USE OF RESOURCES TO MAXIMIZE PROFIT

EN

THOR 450 / THOR 560 / THOR 660 / THOR 860 / THOR 1020

BAND SAWING MACHINES > SEMI-AUTOMATIC > DOUBLE COLUMN

- 0° cuts, suitable for ferrous & non-ferrous materials
- solid / structural - section round / square / rectangular / hollow tubes



SIMPLE AND POWERFUL WITH A HEAVY DUTY HEART

Semiautomatic band sawing machines on linear guide for big capacity





MITSUBISHI
ELECTRIC

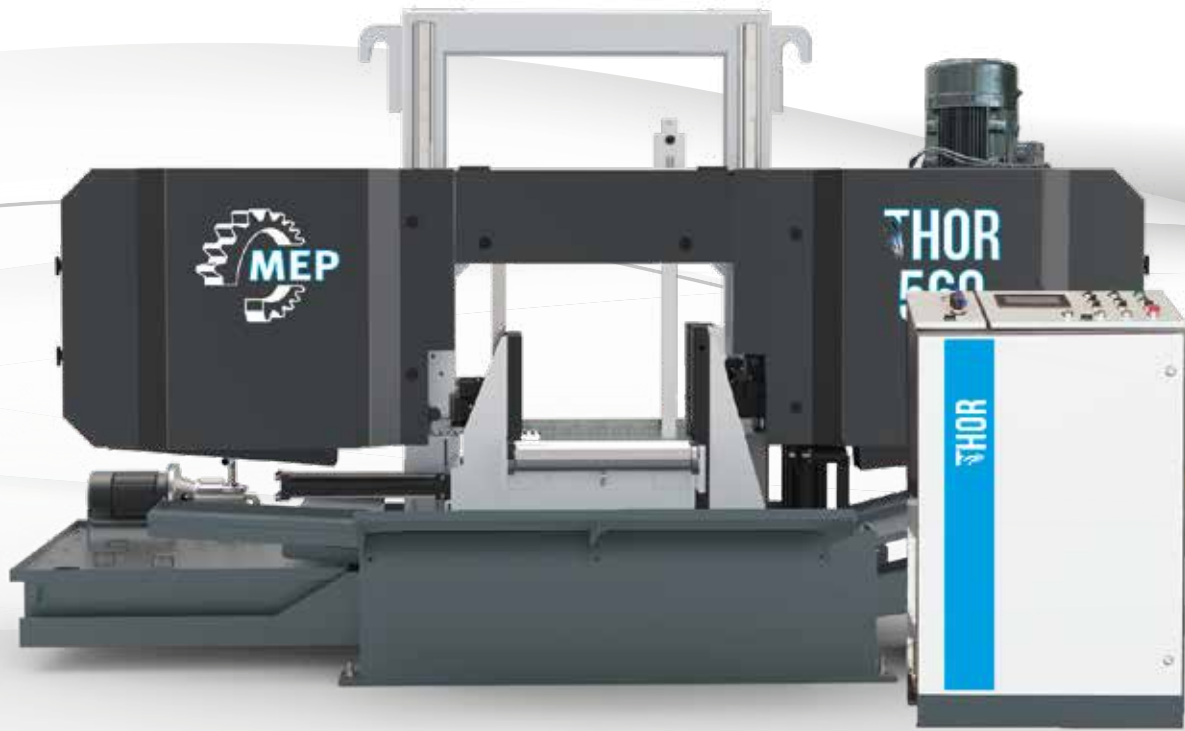


TECHNICAL FEATURES

	THOR - 450	THOR - 560	THOR - 660	THOR - 860	THOR - 1020
Minimum Cut Length (Without bundle)	15 mm	25 mm	25 mm	25 mm	25 mm
Minimum clamping	50 mm	140 mm	95 mm	95 mm	110 mm
Max. open vice	460 mm	570 mm	670 mm	870 mm	1030 mm
Max. vertical open vice	460 mm	565 mm	665 mm	865 mm	1030 mm
Cutting accuracy (Horizontal & Vertical)	0.1 mm/100 mm (+/-)	0.1 mm/100 mm (+/-)	0.1 mm/100 mm (+/-)	0.1 mm/100 mm (+/-)	0.1 mm/100 mm (+/-)
Bandsaw blade dimension	6600 x 41 x 1,3 mm	7700 x 54 x 1.6 mm	8800 x 67 x 1.6 mm	9300 x 67 x 1.6 mm	11000 x 67 x 1.6 mm
Blade speed	15-95 m/min	20-100 m/min	20-100 m/min	20-100 m/min	20-100 m/min
Blade motor	7.5 Kw (10 HP)	9 Kw (12.5 HP)	11 Kw (15 HP)	15 Kw (20 HP)	15 Kw (20 HP)
Hydraulic motor	1,5 Kw (2 HP)	2.2 Kw (3 HP)	2.2 Kw (3 HP)	2.2 Kw (3 HP)	2.2 Kw (3 HP)
Weight of the saw	3000 Kg	5000 Kg	6200 Kg	7200 Kg	9500 Kg
Size of machine Shipping dimensions	3600 x 1340 x 2050 mm 3700 x 1450 x 2200 mm	3580 x 1900 x 2260 mm 3660 x 1700 x 2400 mm	3810 x 1900 x 2445 mm 3900 x 1700 x 2600 mm	4370 x 1900 x 3020 mm 4400 x 1700 x 3120 mm	5060 x 1900 x 3274 mm 5200 x 1700 x 3374 mm

CUTTING CAPACITY

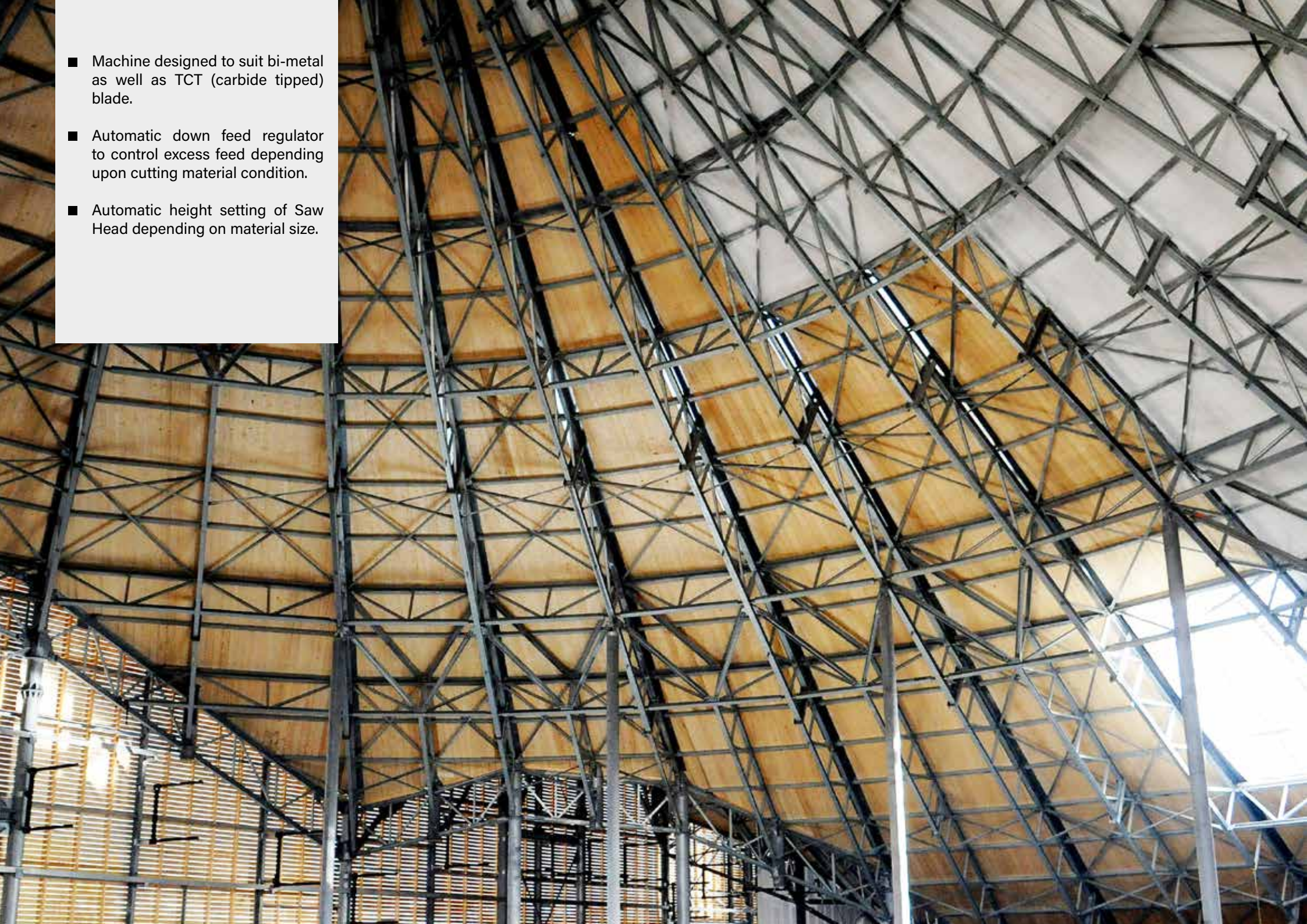
	450	560	660	860	1020
	450	560	660	860	1020
	450 x 450	560 x 560	660 x 660	860 x 860	1020 x 1020
	450 x 270	560 x 335	660 x 400	860 x 520	1020 x 615



A large industrial machine, likely a lathe or mill, is shown in a close-up view. The machine is primarily white and grey. A large, dark, multi-spoked flywheel is visible on the left side. In the center, a large, cylindrical metal component, possibly a pipe or a shaft, is mounted on a bed of rails. The component has a rusted, brownish surface. Various mechanical parts, including a carriage and tool holder, are visible on the right side. The machine is set against a plain white background.

"USER FRIENDLY" PROGRAMMING CYCLES

- Machine designed to suit bi-metal as well as TCT (carbide tipped) blade.
- Automatic down feed regulator to control excess feed depending upon cutting material condition.
- Automatic height setting of Saw Head depending on material size.





> PRODUCTIVITY

_ Built in coolant tank powered with High Flow Coolant pump and flow nozzle with Tap control to clean better the blade granting so a longer life.



_ Blade moves on graded cast iron wheels. Driver wheel on specially designed spindle of worm reduction gear box.

_ Automatic Hydraulic blade tension regulation on preset stretching force and tension release when machine not in use.



_ Hydraulic powered cleaning wire brush to clean better the blade granting so a longer life.



_ Auger chip conveyor complete of container grants better operational conditions, longer life of the sawing machine, reducing machining time and avoiding so interruption of manufacturing process for manual disposal of scraps.



Electrical control panel with push button, emergency stop button, main isolator, PLC, VFD, step down transformer, auxiliary contractor, cable connector and connector with fuses. ■

Hydraulic valve and feed pressure adjustment valves are fitted on control panel for easy operation. ■

> PRECISION

_ Moving blade guide mounted on rigid construction slide way arrangement which is attached to the moving vice to make machine foolproof and automatically adjust as per the bar size.



_ Heavy duty steel welded structure - torsion free construction to cut vibrations giving max stability to the saw and consequently accurate cuts and longer blade life.



_ Working light to light up the working area.

_ Split vice for rigid clamping and burr free cuts: split main vice helps in holding the job on both sides of cutting.

> ADVANCED TECHNOLOGY FOR HIGH PERFORMANCE AT HIGH SPEED



_ Blade guides precisely machined and fitted with replaceable carbide pads and anti-friction bearings for smooth up-down movements of cutting head (blade).
(Cutting head guided in to vertical high precision Linear Motion Guide Bearing for higher productivity and longer blade life.)
(Hand operated lubrication system for vertical columns bearings.)



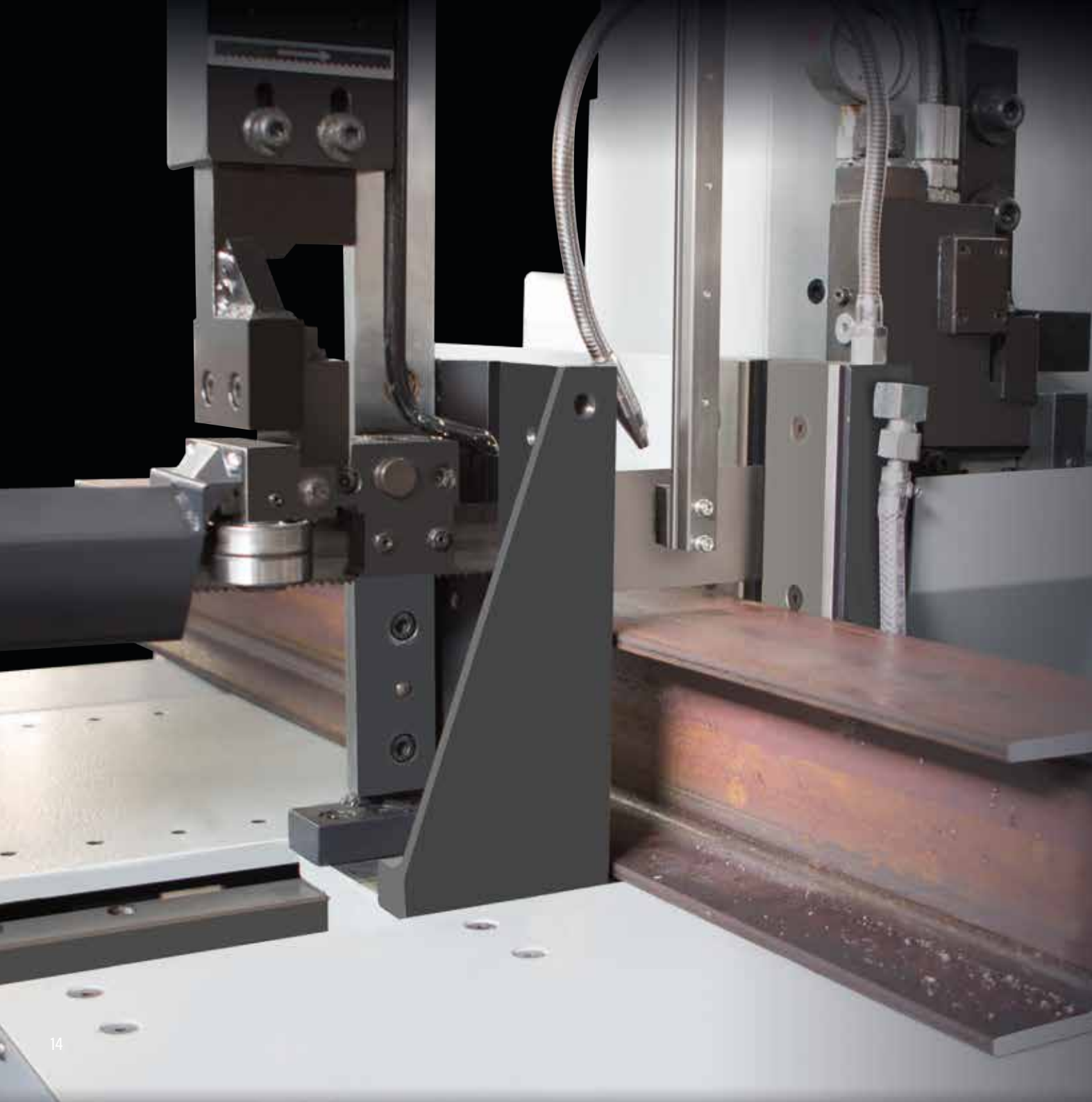
_ Electric motor is coupled to the gear box. Saw Blade speed change through variable frequency drive (INVERTER) for optimum productivity and tool life.

_ Hydro Mechanical sensor to adjust feed without operator involvement depending upon material type, hardness and cross - section.



LATEST GENERATION HYDRAULIC POWER PACK, WITH HIGH EFFICIENCY AND aLOW CONSUMPTION.

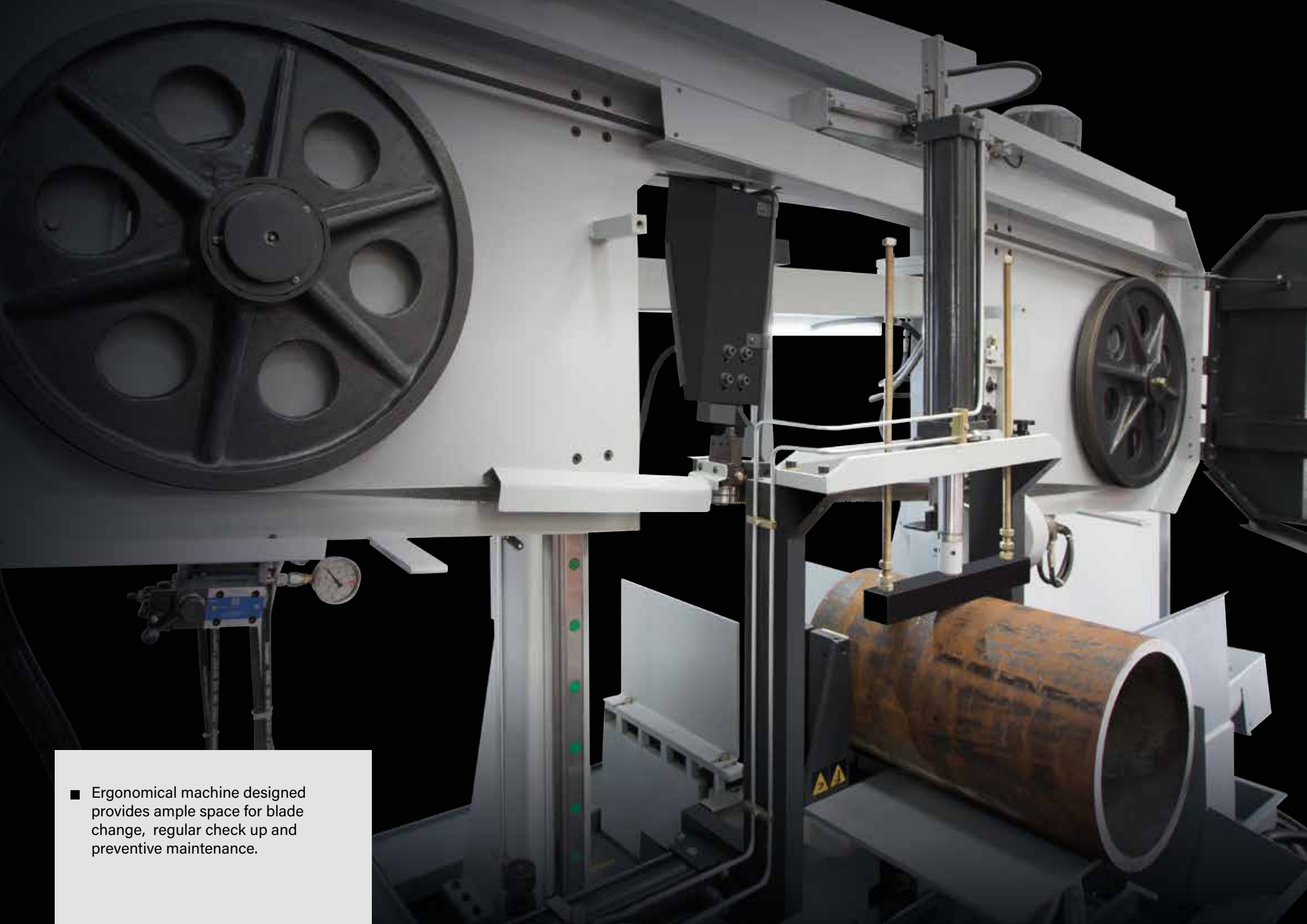
Separate hydraulic power pack and tank for easy maintenance.



- Infinitely variable pressure controlled cutting feed and upward return rapid movement by hydraulic cylinder.
- Auto height stop on return stroke of cutting head.
- Infinitely variable Feed Control Valve. Hydraulic automatic feed regulation to adjust in automatic head feed rate according to size and hardness of material.
- Automatic machine stop if blade breaks.
- Hydraulically operated main vice with double acting hydraulic cylinder.



- Blade guide united with vice granting a self-adjustment according to size of material.
- Fast approach device grant a quick descent of the sawhead very close to the material, reducing so the cycletime and blade demages indipently to the size of the material.
- Fast approach blade device to optimize productivity.



- Ergonomical machine designed provides ample space for blade change, regular check up and preventive maintenance.

- 1 - Hydraulic bundle clamping
- 2 - 6° canted head
- 3 - Laser light
- 4 - Electronic Feed Sensor (with PLC)
- 5 - Electronic Feed Sensor (without PLC)
- 6 - Blade Deflection Sensor (with PLC)
- 7 - Blade Deflection Sensor (without PLC)
- 8 - Touch screen HMI
- 9 - Hydraulic blade guide
- 9 - Mist lubrication
- 10 - Power transformer (standard machine supplied a V. 400 - 50 Hz)
- 11 - Bimetal blade

DESIGN AND PRODUCTION OF CUSTOM CUTTING LINES

MEP's passionate team of designers and technical experts use the latest mechanical design software to keep at the forefront of metal cutting technology, and to choose the best, most innovative and advanced solutions to all possible needs in metal cutting.

MEP's technical staff are able to design and build custom cutting machines and equipments to meet all possible needs, from dedicated cutting lines to railmounted machines for cutting continuously formed tube, etc..

MEP SERVICE PROGRAM:

- > GLOBAL SERVICE
- > LOCAL SERVICE

OUR EXPERIENCE AND SUPPORT, TO GRANT YOUR EFFICIENCY, ALWAYS!

MEP offers a variety of solutions as guarantee of high productivity:

- > TRAINING,
- > SOFTWARE,
- > SERVICE & SUPPORT,
- > MAXIMISING SOLUTIONS,
- > INTEGRATIONS,
- > REFURBISHING OF USED MACHINES



SPARE PARTS

- Worldwide stock availability for parts and logistics:
Pergola (ITALIA), Woodstock (CANADA), Conway (USA), San Paolo (BRASILE), Suzhou (P.R. CHINA)
- Availability of majority of parts for prompt delivery

SERVICE & SUPPORT

- Customer service is definitely the added value to company task; a reliable organization, dynamic and with a great technical background capable to service, install and commission all our machines as well as organize in-house training both for sales and engineering team.

SOFTWARE UPDATING

- DATA TRANSFER EXTREMELY EASY AND FAST: to get updating and changes of software via email, to be transferred through USB, SD or MMC card using the slot on main console.

TRAINING

- MEP has highly qualified and certified trainers to increase your know-how on our products.
- In-house training for operators to show the right use.

Autorizzazione del ministero per i Beni e le Attività Culturali - Prot. n. 6603 del 5-7-2010



IN THE MUSEUM OF OUR CITY THE
ONLY GROUP OF GOLDEN BRONZE
STATUES IN THE WORLD

museo.bronzidorati@libero.it



MEP SPA

Sede Operativa: Via Enzo Magnani, 1
61045 PERGOLA (PU) ITALY

Tel. (+39) 0721 73721

Sede Legale: Via Brera, 3
20121 MILANO (MI) ITALY

R. Imprese, C.F. e P. IVA n°13051480153

Cod. EORI IT13051480153

Capitale Sociale € 10.372.791,00 int. vers.

Pec: mepsa@mepsaws.legalmail.it

www.mepsaws.com

mepsa@mepsaws.it